



Type : **PUSHER HARBOUR TUG**

Year Built : 2014

Port of Registry : Port Kelang, Malaysia

Class
American Bureau of Shipping
+A1,+A2, € Towing Vessel,
BP (50T), FFV 1, +AMS

Dimensions
Length Overall : 30.0 m
Breadth Moulded : 10.5 m
Draft Design : 4.2 m
Depth Moulded : 4.9 m

Tonnage
Net Tonnage : 109
Gross Tonnage : 366

Speed : 12 knots

Bollard Pull: : 55 Ton

Capacity
Fuel oil : 180.0 m³
Fresh water : 40.0 m³
Foam : 11.0 m³
Dispersant : 3.6 m³

Main Engines
Niigata 6L26HLX
2 x 2000 bhp at 750 rpm

Propulsion
2 x Niigata ZP-31 fixed pitch propeller with
steerable Azimuth thrusters

Generators
3 x Cummins 6CTA8.3 – D(M)
95 kW, 380V, 3ph, 50Hz

Deck Machinery

Anchor windlass/ Towing Winch :
Plimsoll electro hydraulic driven
Braking capacity 120 T

Aft Towing Winch (with spooling device):
Plimsoll electro hydraulic driven
Braking capacity 120 T

Navigational & Communication Equipment

Echo Sounder, EPIRB, Marine Radar, SART,
GMDSS VHF Radio, GPS Navigator, WASS / GPS
Plotter, Magnetic Compass, AIS System, Satellite
Compass / Auto Pilot, Navtex Receiver, SSB, VHF
Radio.

Fire Fighting System

FI-FI Class 1
Engine driven SFP model SFP 300x400 XP pump
Capacity 2,400 m³/h
Gearbox with internal hydraulic wet multidisc clutch
2 x FFS 1200/300LB fire monitor (1200 m³/h each)
Throw Length: 120m
Throw Height: 50m
One Set Foam Mixing fitting
Self drenching system: Main Deck
Deck House
Wheel House

Others

Oil Pollution Fighting system

Accommodation

12 persons

Builder

Keppel Nantong Shipyard Co., Ltd

Owner

KSP Towage Sdn Bhd

This vessel specification is given in good faith and assumed to be correct as at 03 July 2019

KSP TOWAGE SDN BHD (680765-U)

No. 129-01 & 129-02, Jalan Mutiara Emas 2A, Taman Mount Austin, 81100 Johor Bahru, Johor, Malaysia.

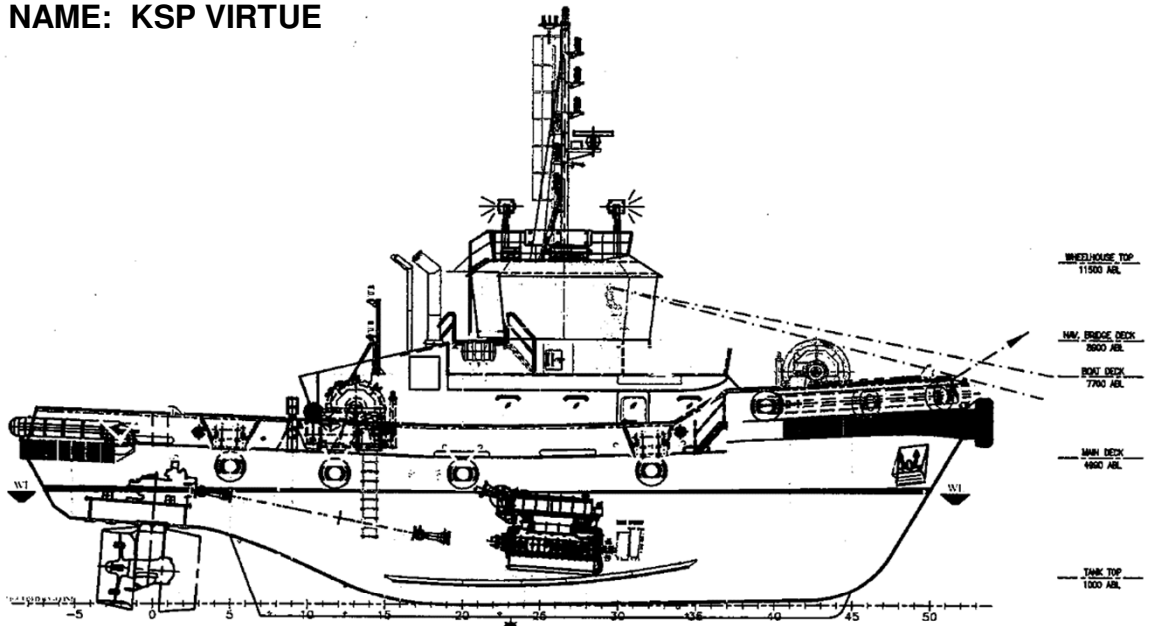
Telephone: +607 364 9070

Fax: +607 364 9362

Email: general@kspejora.com

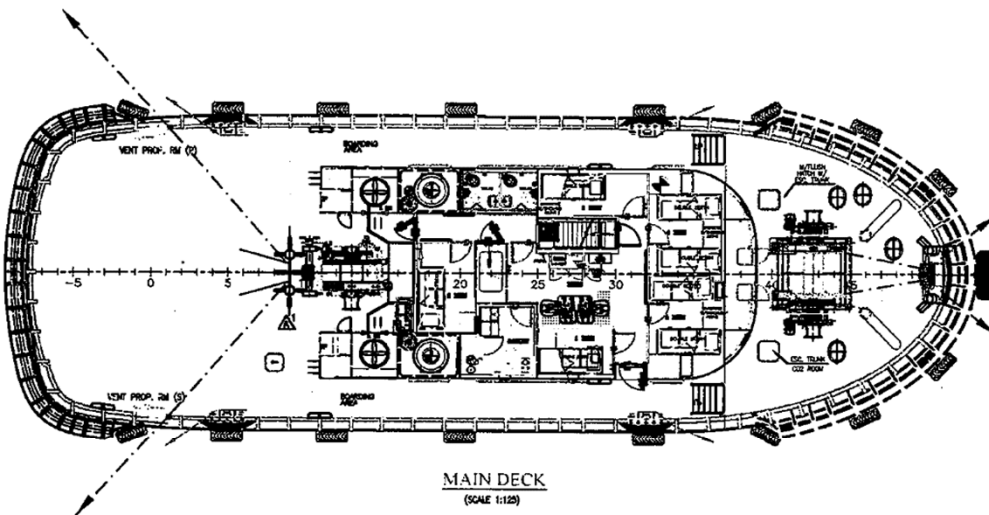
GENERAL ARRANGEMENT

TUG NAME: KSP VIRTUE



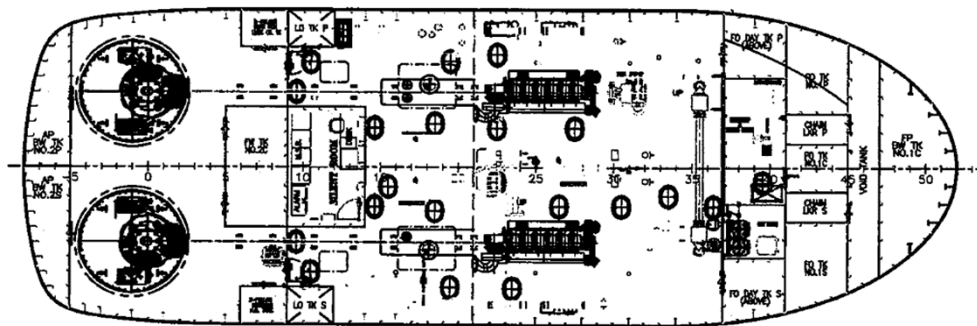
OUTBOARD PROFILE

(SCALE 1:125)



MAIN DECK

(SCALE 1:125)



BELOW MAIN DECK

(SCALE 1:125)