



Type	: PUSHER HARBOUR TUG	Propulsion	Niigata ZP-21 fixed pitch propeller with steerable Azimuth thrusters
Year Built	: 1998	Generator	Detroit AC diesel generator 4-71 T
Port of Registry	: Singapore	Deck Machinery	Forward: One electro hydraulic windlass/ towing winch Braking capacity 100 T
Class	ABS ✕ A1 Towing Vessel (Fire Fighting Capability) (E) ✕ AMS	Aft:	One electro hydraulic towing winch Braking capacity 100 T
Dimensions		Towing Hook:	40 T SWL
Length overall	: 26.33 m	Navigational Equipment	Radar, Gyro, SSB Radio, Auto Pilot, Echo Sounder, Marine VHF, Magnetic Compass
Length BP	: 22.50 m	Off-Ship Fire Fighting System	One independent diesel engine 1200 m ³ /hr x 120 m head
Beam moulded	: 9.00 m	Two monitors of 600 m ³ /hr each	
Depth moulded	: 4.70 m	Throw Length : 120 m	
Tonnage		Throw Height : 65 m	
Registered tonnage	: 73 T	One foam mixing fitting	
Gross tonnage	: 246 T	Self drenching system:	Main deck Deck house Wheel house
Speed	: 12 knots	Accommodation	8 persons
Bollard Pull	: 45 T	Builder	Keppel Singmarine Dockyard Pte. Ltd., Singapore
Capacity		Owner	Keppel Smit Towage Pte Ltd
Fuel	: 70 m ³		
Fresh water	: 15 m ³		
Foam	: 6 m ³		
Dispersant	: 2m ³		
Main Engine	Niigata 6L25HX 2 x 1,600 bhp at 750 rpm		
Propulsion	Niigata ZP-21 fixed pitch propeller with steerable Azimuth thrusters		
Generator	Detroit AC diesel generator 4-71 T 2 x 64 kW, 50Hz, 3 phase and 380 volts		

This vessel specification is given in good faith and assumed to be correct as at 02 July 2019



KEPPEL SMIT TOWAGE PTE LTD

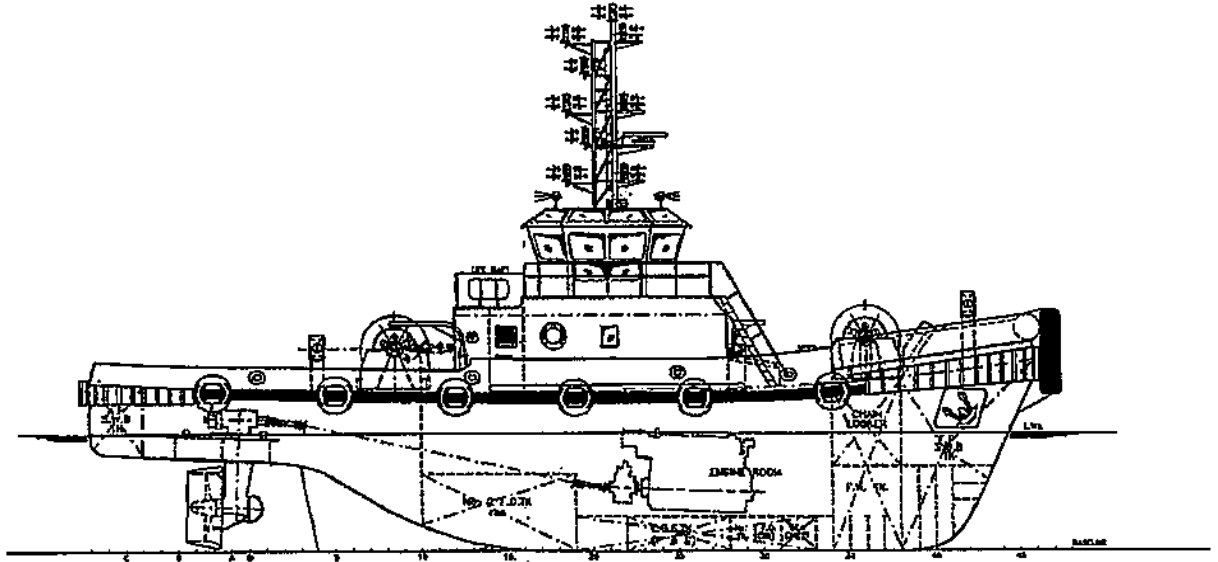


23 Gul Road, Singapore 629356 Telephone: +65 666 84 222 Fax: +65 666 84 333
Email: kst@keppelsmit.com.sg Website: www.keppelsmit.com.sg

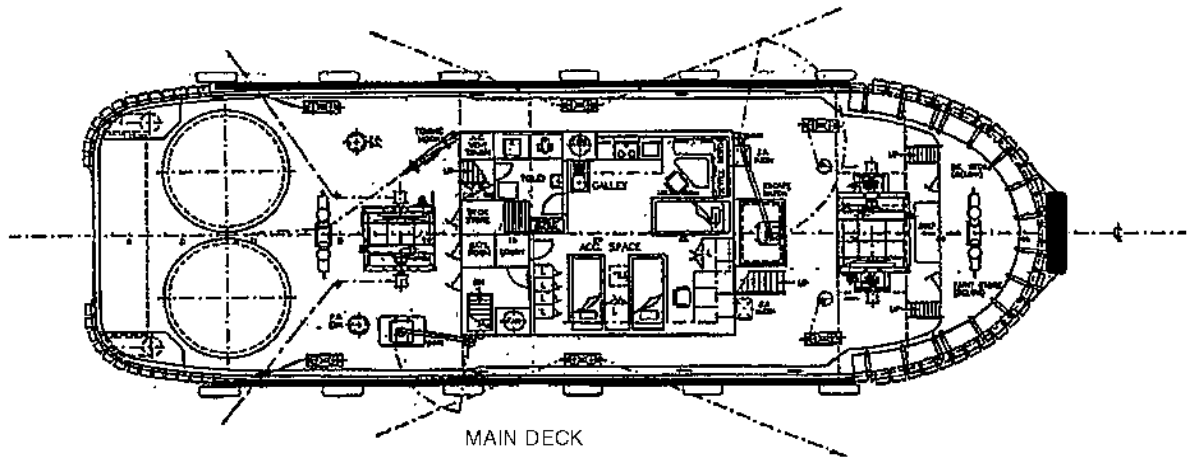


GENERAL ARRANGEMENT

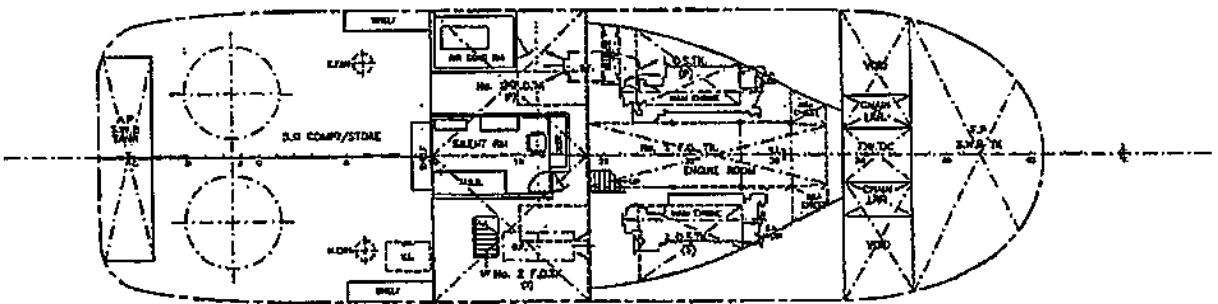
TUG NAME: KST 35



OUTBOARD PROFILE



MAIN DECK



BELOW MAIN DECK