

# MAJU 510



**Type** : **PUSHER HARBOUR TUG**

**Year Built** : 2011

**Port of Registry** : Singapore

**Class** : ABS  
A1, (Fire Fighting Capability), AMS

**Dimensions**

Length Overall : 32.00m  
Breadth Moulded : 11.50m  
Draft Design : Not more than 5.50m  
Depth Moulded : 5.20m

**Tonnage**

Net tonnage : 140 T  
Gross tonnage : 469 T

**Speed** : 12 knots

**Bollard pull** : 70 Tonnes

**Capacity**

Fuel : 182.0 m<sup>3</sup>  
Fresh water : 50.0 m<sup>3</sup>  
Foam : 7.0 m<sup>3</sup>  
Dispersant : 3.0 m<sup>3</sup>

**Main engine**

Niigata 6L28HX  
2 X 2500 bhp at 750 rpm

**Propulsion**

2 x Niigata ZP-41, fixed pitch propeller with steerable Azimuth thrusters

**Generator**

Diesel driven generator, 3 x 120 kW  
3 phase 4 wire system. 415 volts A.C

**Deck machinery**

Anchor Windlass / Towing Winch:  
Electro hydraulic driven  
Brake holding Capacity 150 Tonnes

Aft Towing Winch  
Electro hydraulic driven  
Brake holding capacity 180 Tonnes

**Navigational & Communication Equipment**

SSB Radio, Radar, Satellite Compass, Auto Pilot, Echo Sounder, VHF, GPS, Magnetic Compass, Draft Design, Navtex receiver, AIS, GMDSS A3, SSAS, Inmarsat mini-m, SART & EPIRB, Weather Fax

**Fire Fighting System (Half FiFi)**

- Engine driven horizontal centrifugal pump capacity 1,400 m<sup>3</sup>/hr at 140meter head  
- 2 x SKUM fire monitor (600 m<sup>3</sup>/hr each)  
Throw Length: 100 meter  
Throw Height: 45 meter

- One set foam proportional system fitted  
- Self drenching system: Main deck  
Deck house  
Wheel house  
- Permanently Installed Carbon-dioxide for Engine room

**Others**

CCTV for aft towing winch & Engine room

**Accommodation**

12 persons

**Builder**

Keppel Nantong Shipyard Co. Ltd

**Owners**

Maju Maritime Pte Ltd

*This vessel specification is given in good faith and assumed to be correct as at 02 July 2019*



**KEPPEL SMIT TOWAGE PTE LTD**

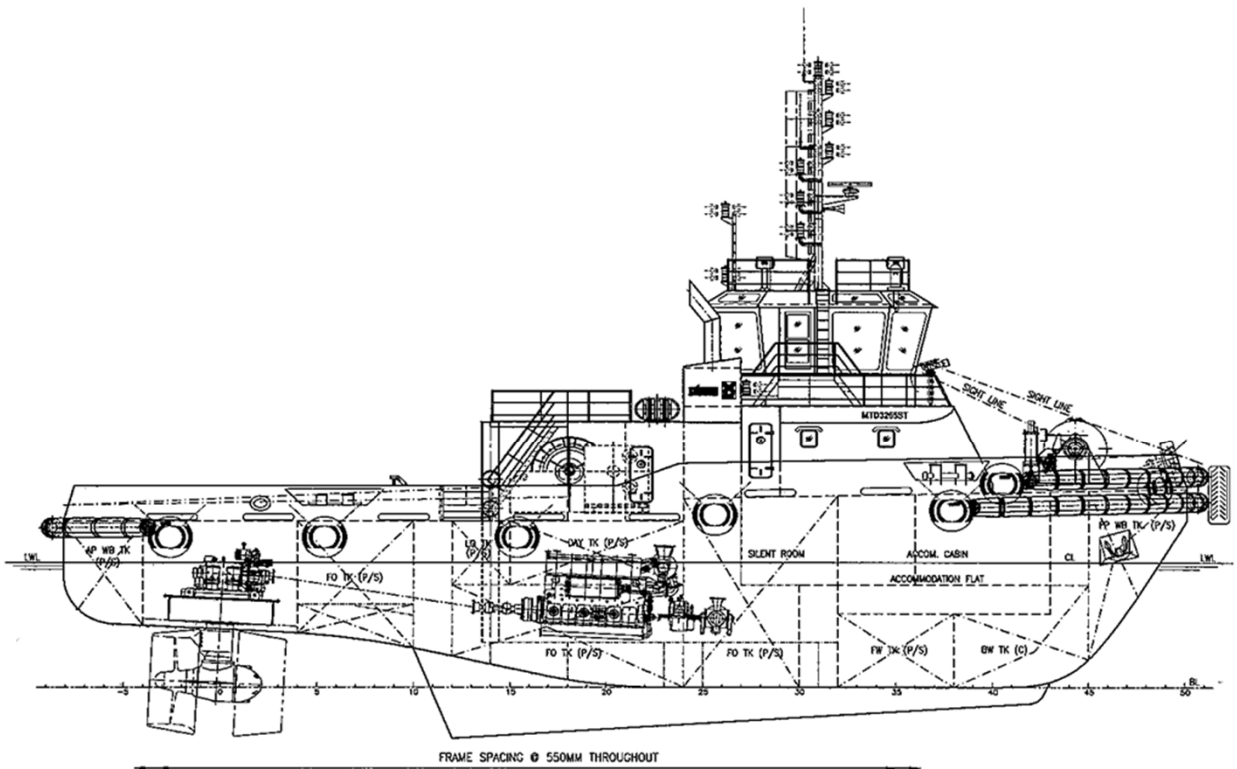


23 Gul Road, Singapore 629356 Telephone: +65 666 84 222 Fax: +65 666 84 333  
Email: kst@keppelsmit.com.sg Website: www.keppelsmit.com.sg

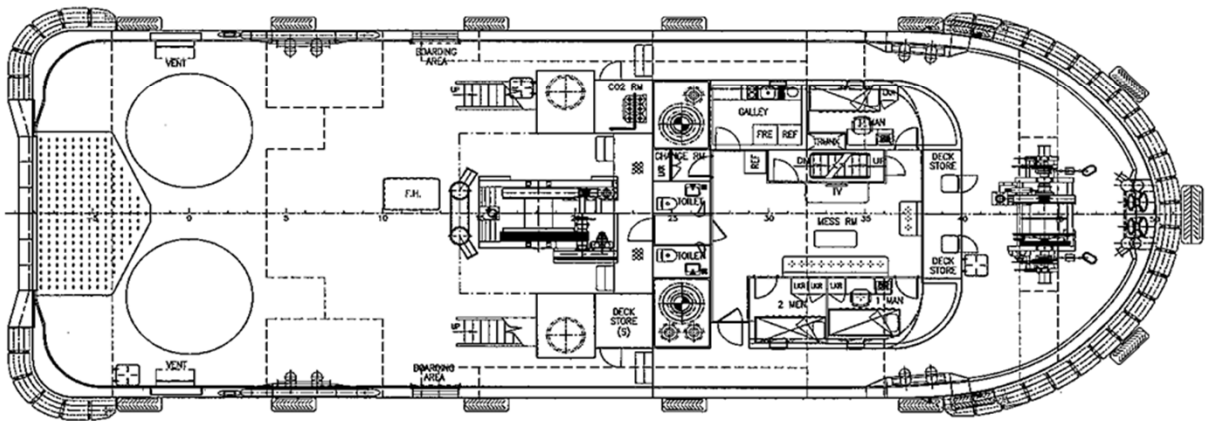


# GENERAL ARRANGEMENT

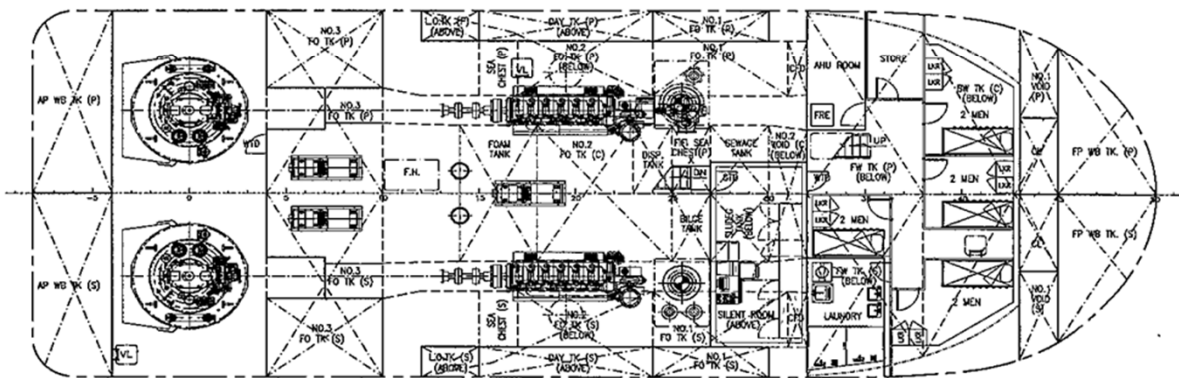
TUG NAME: MAJU 510



PROFILE



MAIN DECK



BELOW MAIN DECK