



Type	: TRACTOR HARBOUR TUG	Deck Machinery	Anchor windlass : Plimsoll electro hydraulic driven
Year Built	: 2005		
Port of Registry	: Port Kelang, Malaysia	Aft Towing Winch	: Plimsoll electro hydraulic driven
Class	: ABS ⊗ A1 ⊗ AMS	Braking capacity	120 T
Dimensions		Navigational & Communication Equipment	Echo Sounder, EPIRB, GMDSS Radar Transponder, GMDSS VHF Radio, GPS Navigator, Marine Radar, Navtex Receiver, SSB, VHF Radio
Length Overall	: 27.8m	Fire fighting system	Main Engine driven Nijhuis model HGT1- 250.500 pump Capacity 1400 m ³ /hr Gearbox with clutch Kumera : 2FGEC-2340 2 x SKUM fire monitor
Breadth Moulded	: 9.80m		Throw length: 100m
Design Draft	: 5.35m		Throw height: 45m
Depth Moulded	: 4.35m		1 set Foam Mixing fitting
Tonnage			Self drenching system: Main Deck Deck House Wheel House
Net Tonnage	: 87 T	Accommodation	10 persons
Gross Tonnage	: 290 T	Others	Oil Pollution Fighting System
Speed	: 12 Knots	Builder	Keppel Singmarine Pte. Ltd.
Bollard Pull	: 45 T excess	Owner	Kejora Resources Sdn Bhd
Capacity			
Fuel	: 100m ³		
Fresh water	: 30m ³		
Foam	: 13m ³		
Dispersant	: 4m ³		
Main engines			
Niigata 6L22HLX			
2 x1800bhp			
Propulsion			
2 x Niigata ZP-21 fixed pitch propeller with steerable Azimuth thrusters			
Generator			
3 x Cummins 6BT5.9 D(M)			
83 kW, 380V, 3pH, 50Hz			

This vessel specification is given in good faith and assumed to be correct as at 03 July 2019

KEJORA RESOURCES SDN BHD (607204-V)

No. 129-01 & 129-02, Jalan Mutiara Emas 2A, Taman Mount Austin, 81100 Johor Bahru, Johor, Malaysia.

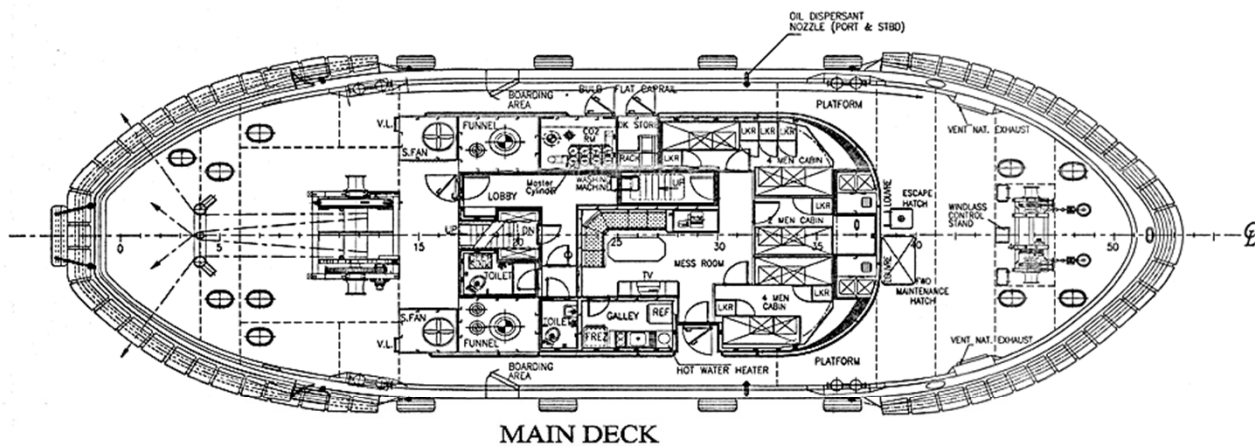
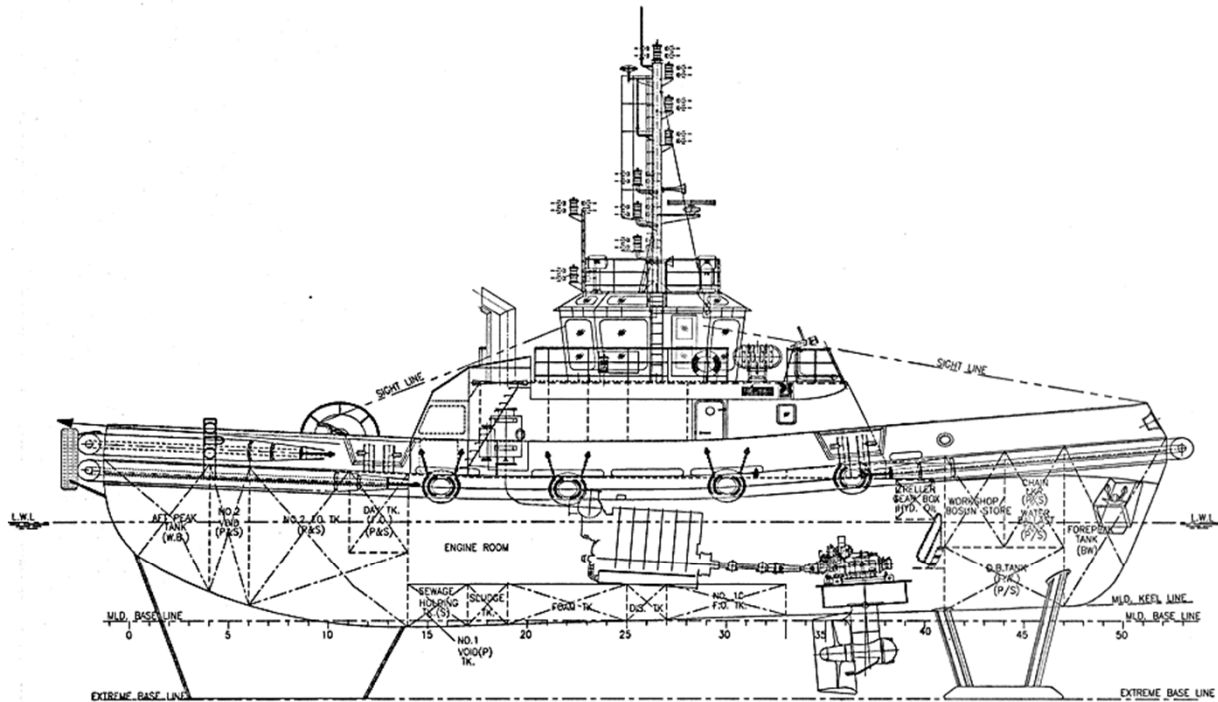
Telephone: +607 364 9070

Fax: +607 364 9362

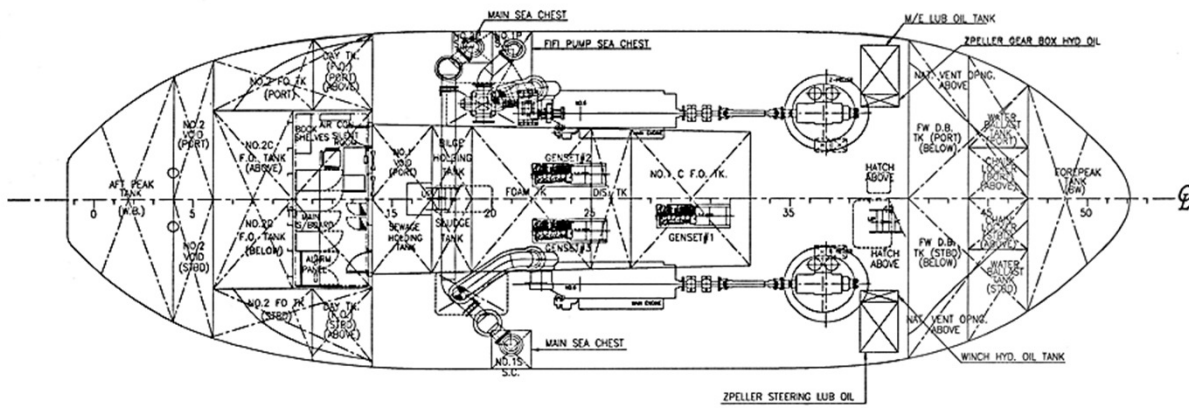
Email: general@kspejora.com

GENERAL ARRANGEMENT

TUG NAME: KEJORA SPACE



MAIN DECK



BELOW MAIN DECK